



TRANE[®]

Precedent[™]

*3 to 10 Ton Light Commercial
Convertible Packaged Air Conditioners*





Precedent is an exceptional packaged product line with the flexibility to span the entire spectrum of light commercial applications.

Sleek Exterior

With its sleek compact cabinet, rounded corners and beveled top, Precedent just may be the most aesthetically pleasing packaged unit on the planet. It is certainly the most versatile. From simple applications to the most complex, Precedent has the solution.

Lots of Options!

Precedent has outstanding features and offers an *unprecedented* selection of options including a choice in controls, electromechanical or the highly sophisticated ReliaTel™ microprocessor controls.

Ultimate Flexibility

Who is in the best position to decide which features meet your specific application needs? You, the customer, of course. Trane's Precedent offers the most flexible light commercial packaged air conditioners in the industry. These units with convertible airflow are not prepackaged; you order and pay for only those options you really need. Things like:

- ReliaTel™ Microprocessor or Electromechanical Controls
- Standard or High Efficiency Cooling Capacities
- Low, Medium or High Heat Gas Heating Capacities

- Wide Array of Electric Heat Options
- Direct or Belt Drive, Standard or Oversized Evaporator Fan Motors
- Gas/Electric, Cooling Only, Heat Pumps
- 1-inch Filters with Rack Capable of Accepting 2-inch Filters
- Short Orifice or Thermal Expansion Valve Refrigerant Control

Quality and Reliability

- Trane Built Climatuff™ Hermetic and Scroll Compressors



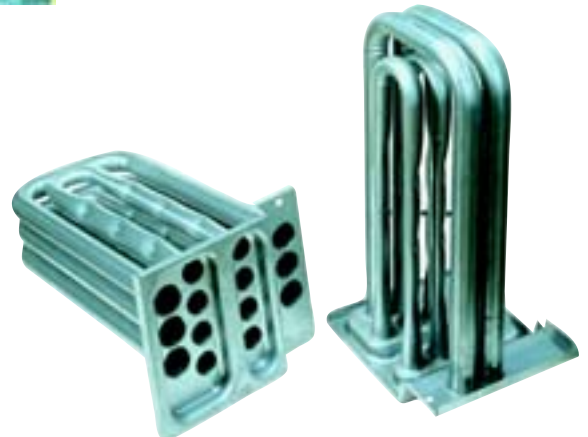
- Progressive Tubular Heat Exchanger with Stainless Steel Burners
- Optional Stainless Steel Heat Exchanger with 10-year warranty.

- Double Sloped and Reversible Condensate Drain Pan



Easy to Install

- Converts from Downflow to Horizontal by moving two panels
- Single-Side Access
- Easy Access Low Voltage Terminal Board
- Single Point Power Connection
- ReliaTel Controlled Units Operate as Standard with Zone Sensor or Thermostat
- Standard Through the Base Condensate Connections



Precedent...The same Trane Quality with added Flexibility

Easy to Service

- Patent Pending Multi-row Condenser Coil Designed with Gaps for Easy Cleaning



- ReliaTel Assists Service Through the Use of Built-in Test Modes
- Standardized Components
- Single-Side Service
- Colored and Numbered Wiring
- Easy Adjust Belt Drive Motors

Factory Installed Options for Higher Quality, Lower Cost Installations

The following options ship factory-installed within our standard "shortest in the industry" ship cycle time.

- **ReliaTel™ Microprocessor or Electromechanical Controls**
- **Through the Base Gas, Condensate and Electric Utilities** simplify wiring and piping.

• **Unit Disconnect or Circuit**

Breakers ensure unit shutdown for servicing.

Factory installation of unit disconnects reduces cost, provides proper mounting, and the opportunity to upgrade to unit circuit breaker protection.



- **Economizer, Dry Bulb, Reference or Comparative Enthalpy** provides free cooling as the outdoor temperature and/or humidity decreases. Correctly installed economizers offer great energy savings.

• **115-Volt Electrical**

Convenience Outlet provides a building or unit powered GFI circuit for common air conditioning tools and lighting, as well as providing roof accessible outlets required by NEC.

- **Dirty Filter and Fan Failure Switches** trigger a thermostat service light or building controls system to indicate dirty filters or inoperative fans. Factory installation eliminates prohibitive field-installed cost.

- **Hinged Access Doors** permit easy entry to the unit's service access areas. These doors reduce potential roof damage from screws or sharp access door corners.



- **CO₂ Sensing** provides the ability to monitor space occupancy levels within the building by measuring the parts per million of CO₂ (Carbon Dioxide) in the air. As the CO₂ levels increase, the outside air damper modulates to meet the CO₂ space ventilation requirements. The CO₂ accessory is available for field-installation.
- **Ventilation Override Accessory** – The unit can be set to transition up to 3 different pre-programmed sequences for Smoke Purge, Pressurization, and Exhaust. The transition occurs when a binary input on the RTOM is closed (shorted). This would typically be a hard wired relay output from a smoke detector or fire control panel. The ventilation override accessory is available for field-installation.

- **Dehumidification (Hot Gas Reheat)** – This option allows for increased outdoor air ventilation. It reduces humidity levels while increasing comfort level in the air space. Cooling can operate without a demand for dehumidification. The hot gas reheat coil is designed to deliver maximum reheat temperatures and to pivot for easy access cleaning. This is available for all high efficiency models (with the exception of 6 ton).



- **Direct or Belt Drive Evaporator Fan Motors** for varying airflow requirements.



- **Barometric Relief**
- **Phase Monitor***
- **Supply and/or Return Smoke Detectors* ***

Factory installed options give you better reliability, faster installation, increased service capabilities, and a greater return on your investment. In addition, you get:

- Consistent, quality installation of desired options.
- Tested factory reliability
- Single source responsibility
- UL approved installations
- Lower cost on equipment and labor

*Phase Monitor available for 3-phase, ReliaTel models only.

**Return air smoke detectors for certain models have minimum air flow requirements. For specifics, contact a Trane Representative.

Choice of Sensors

Many sensor options are available including:

- Digital LCD (Liquid Crystal Display) zone sensor with the look and functionality of standard Trane zone sensors. This sensor includes a digitally displayed set point adjustment and space temperature in Fahrenheit or Celsius and includes FAN and SYSTEM buttons that support the same service functions as standard sensors. E-squared memory stores last programmed set points (requires 24 Volts AC).
- Dual Thermistor Remote Zone Sensor decreases the total number of remote sensors needed for space temperature averaging. These sensors are optimized for use with ReliaTel controls.



Trane Precedent with ReliaTel Controls *Plus*

Trane Integrated Comfort™ Systems = Total Comfort, Total Control

VariTrac™

An electronic control system that provides a thermostat for every comfort zone and the intelligence to control the comfort of each zone.

Tracker™ — Tracker building management panel provides microelectronic control and monitoring. Tracker communicates with Precedent and VariTrac. This two-way communication provides status points and alarm messages through a communications link, creating a total Integrated Comfort System (ICS).

Tracker software provides scheduling, monitoring and timed override capabilities, as well as local and auto dial-out indication of alarms. Operator interface is simple and user-friendly with icons on the keypad and a two-line liquid crystal display (LCD).

Tracer™ — The Tracer Integrated Comfort System, when coupled with Precedent, provides the ultimate in centralized control, monitoring, energy management and equipment diagnostic functions.

Tracer provides the ability to monitor and control the operation of each rooftop unit and coordinate their operation with other HVAC equipment.

ICS Status Points

Assuming economizer with comparative enthalpy

- Unit status
- Cooling and heating set point
- Zone temperature
- Supply fan on/off
- Compressor status
- Exhaust fan on/off
- Minimum damper positions (adjustable)
- Current damper position
- Outside air temperature
- Supply air temperature
- Relative humidity

ICS Alarm Messages

- Zone Temperature sensor failure
- High temperature input open
- Heat failure limit open
- Outdoor air sensor failure
- Supply air sensor failure
- Return air sensor failure
- Humidity sensor failure - both outside and return
- Local cool/heat set point failure
- Minimum position potentiometer failure
- Defrost control failure
- Compressor lockout
- Dirty filter
- Supply fan failure
- Supply air temperature
- Relative humidity



Customer Stamp of Approval

We believe the guiding principle behind any great product design is to exceed customer expectations. During the concept development of Precedent, we went directly to our customers to explore the possibilities.

Our research teams literally spent weeks on the road visiting customers and listening to their recommendations. And we didn't stop there.

During every significant phase of Precedent, we held customer and service reviews.

This invaluable customer input, combined with an excellent design and development team, has given us a product with the flexibility to meet any demand in the light commercial market.

Precedent...The Perfect Light Commercial Solution

Things like a compact cabinet, variety of motor and drive types, reversible drain pan, and range of gas and electric heat options make Precedent the perfect choice for either new construction or the replacement market.

The Trane Reputation

Perhaps most impressive, Precedent carries the Trane reputation for excellence, quality and reliability.



It's Hard To Stop A Trane.®

Trane
A business of American Standard Companies
www.trane.com

For more information contact your local dealer (distributor), local district office, or e-mail us at comfort@trane.com

Literature Order Number	RT-SL B001-EN
Date	September 2005
Supersedes	RT-SL B001-EN 07-04
Stocking Location	Webb/Mason

Trane has a policy of continuous product and product data improvement and reserves the right to change design and specifications without notice.